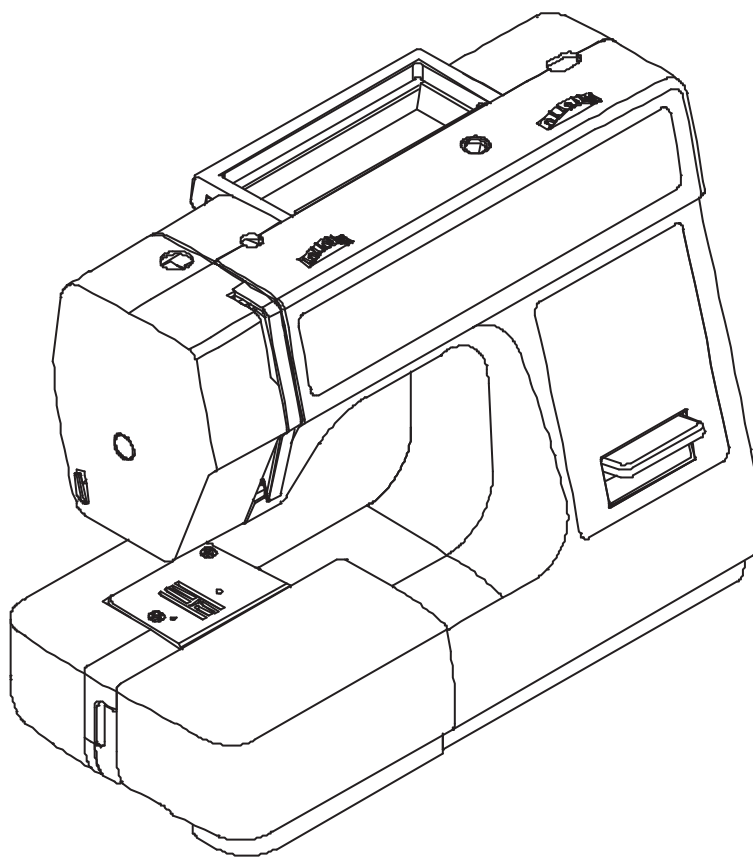
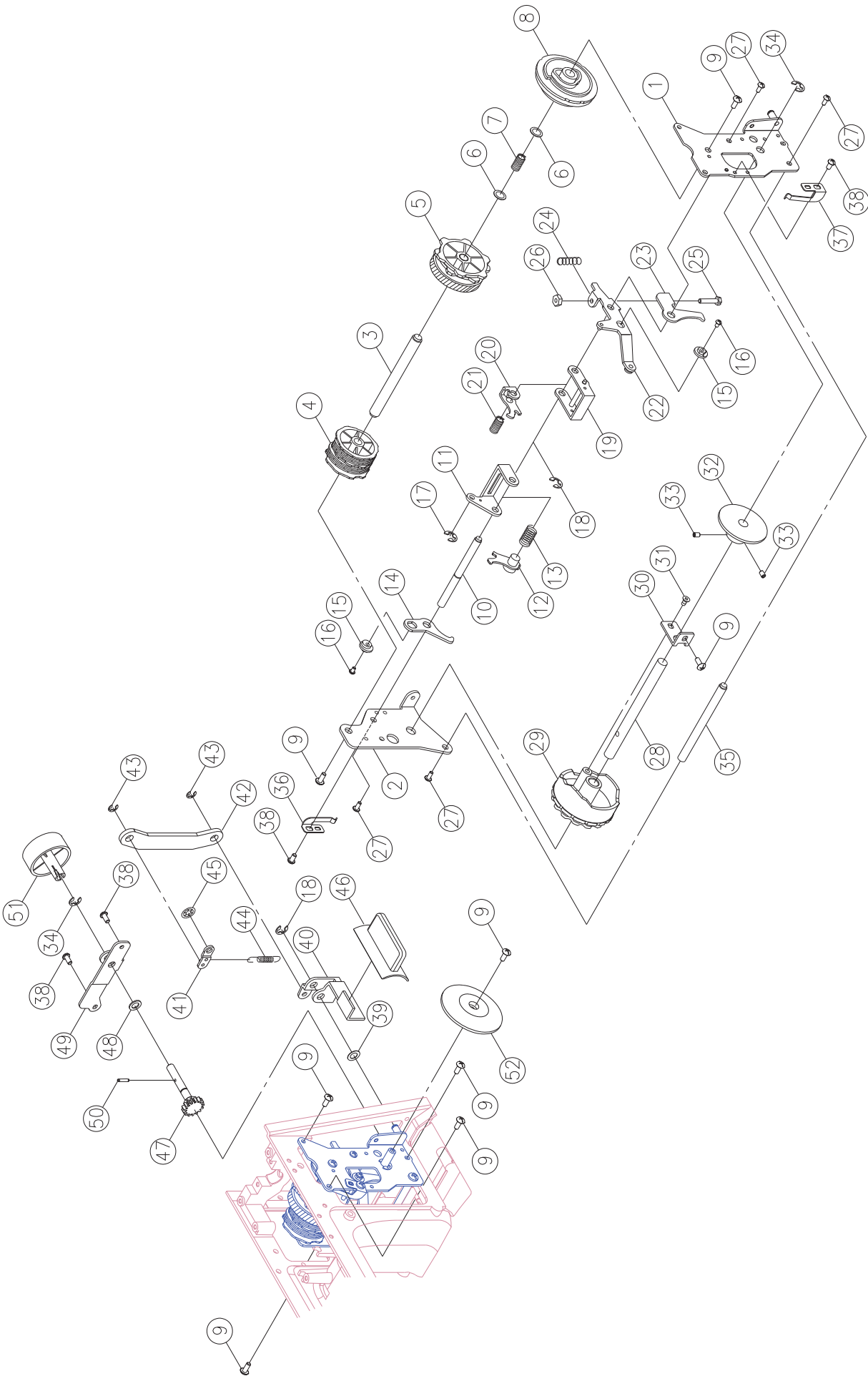


PARTS LIST

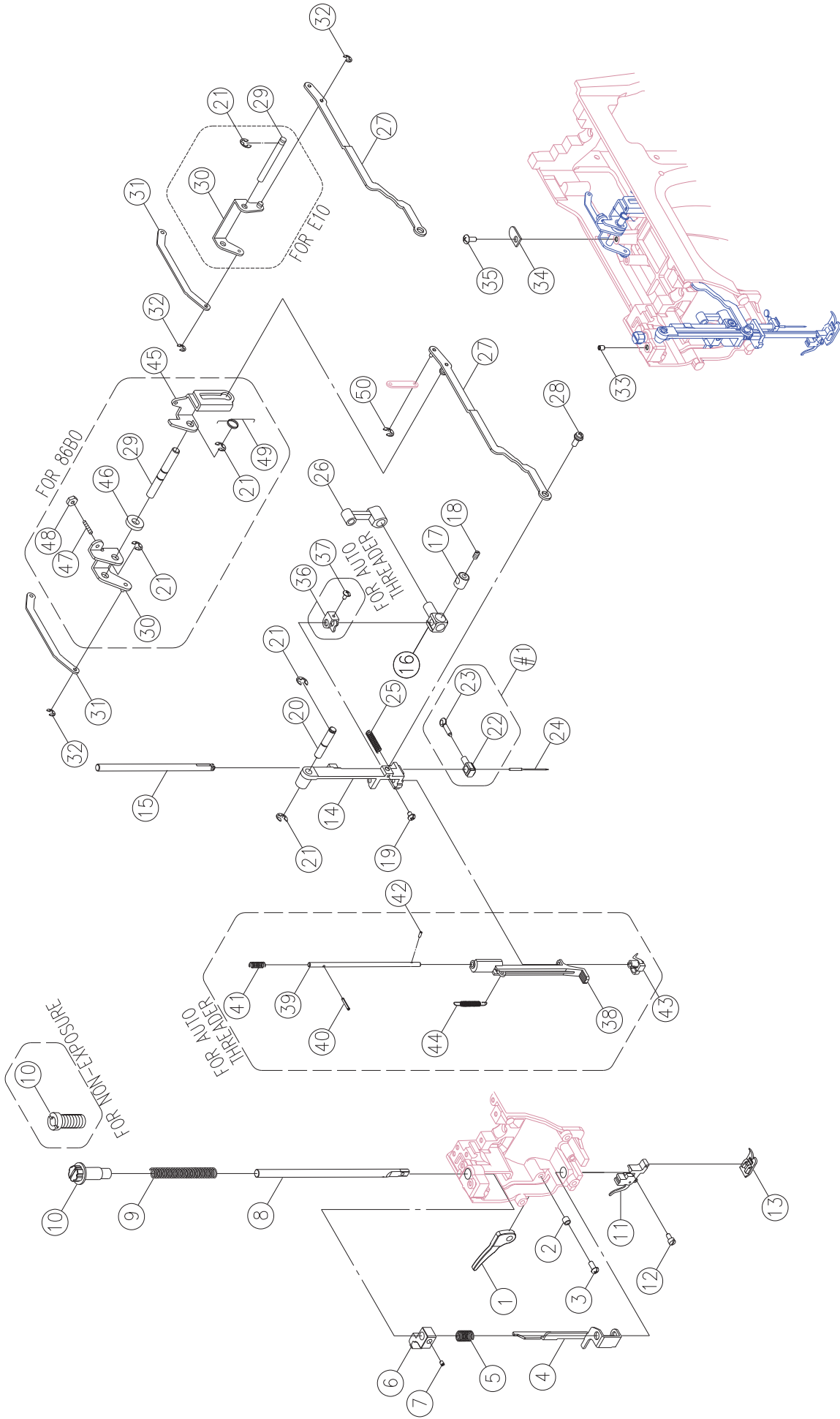


E10

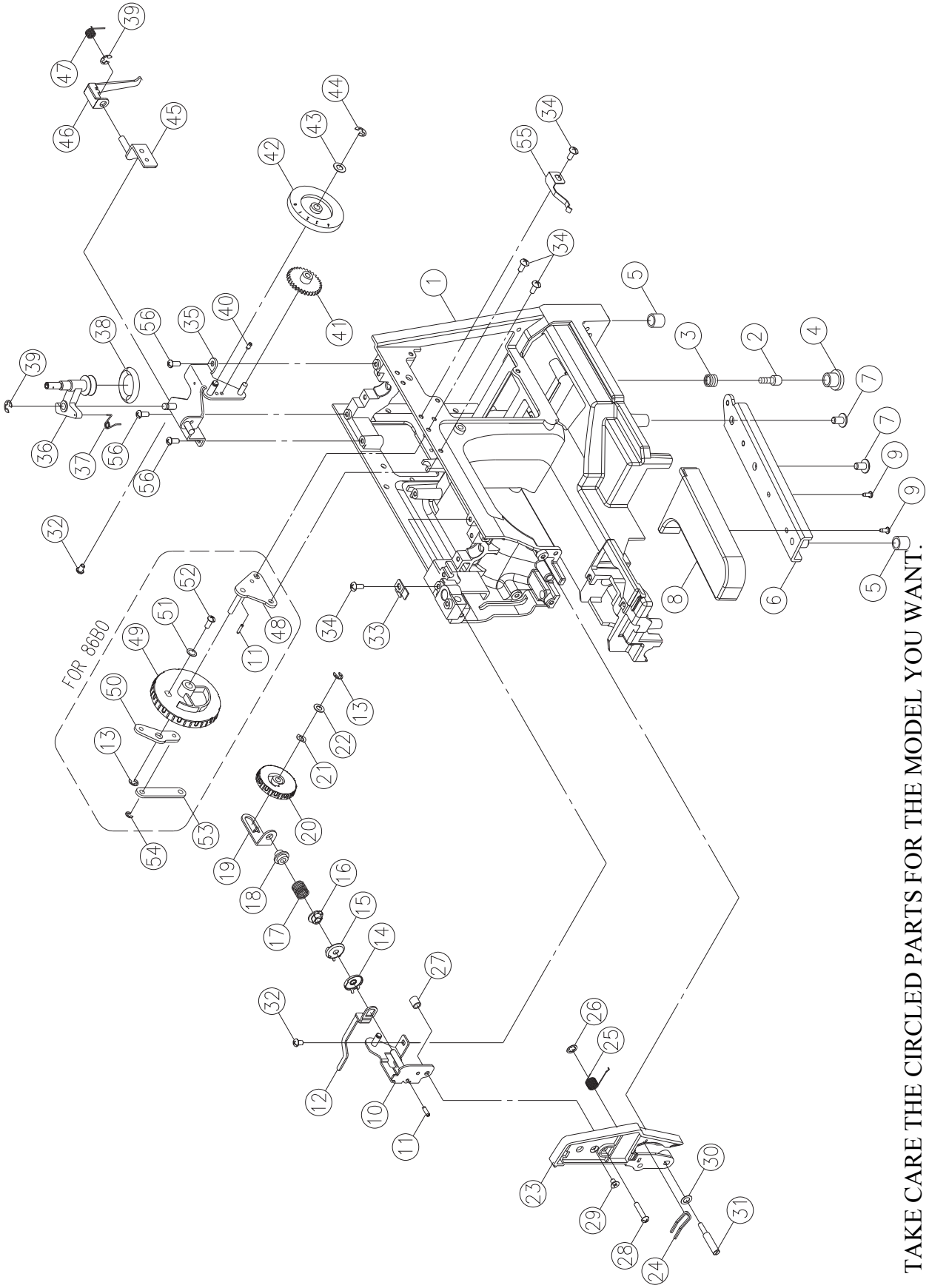
No. Part No.	Description
1	ARM SHAFT
2	SPRING PIN(ϕ 3×18)
3	ARM SHAFT BALANCE
4	SET SCREW(M4×6 C)
5	ARM SHAFT BALANCE PIN (ϕ 3.5×24)
6	ENDURE ATTRITION WASHER (10.2×15×0.5)
7	ARM SHAFT BUSING
8	ARM SHAFT COLLAR COMPLETE
9	SET SCREW(M4×5 C)
10	FEED CAM
11	SET SCREW(M4×4 C)
12	CRANK CONNECTING ROD CAM
13	CRANK CONNECTING ROD
14	CRANK CONNECTING ROD COVER
15	SET SCREW (M4X4 B)
16	WASHER(4.2×7.2×1.2)
17	SET SCREW(11/64×40×12)
18	ARM SHAFT WORM
19	E-RING (ETW-9)
20	WASHER(10.2×15×0.5)
21	ARM SHAFT DRIVER BELT PULLEY
22	ARM SHAFT BUSHING HOLDER PLATE
23	SET SCREW(M4×8 A)
24	ENDURE ATTRITION WASHER (6.2×12×0.25)
25	THREAD TAKE UP LEVER
26	THREAD TAKE UP LEVER SUPPORTER
27	E-RING (ETW-4)
28	THREAD TAKE UP LEVER SUPPORTER SHAFT
29	ARM SHAFT BALANCE PIN
30	SET WASHER
31 416524801	MOTOR DRIVE BELT (156XXL)
32	ARM SHAFT COLLAR
33	ARM SHAFT CLUTCH ANNULUS SPRING
34 416524901	HAND WHEEL
35	SET SCREW (M5X10)
36	HAND WHEEL DECORATED PLATE
#1	FEED CAM COMPLETE
#2	CRANK CONNECTING ROD COMPLETE
#3	ARM SHAFT WORM COMPLETE
#4 416147201	THREAD TAKE UP LEVER COMPLETE



No.	Part No.	Description
1		PATTERN CAM CONTACT PLATE (FRONT)
2		PATTERN CAM CONTACT PLATE (BACK)
3		PATTERN CAM SHAFT
4		PATTERN CAM
5		SS CAM
6		WASHER (8.2×12×0.25)
7		PATTERN CAM SHAFT SPRING
8		FEED REGULATOR CAM
9		SET SCREW (M4×8 A)
10		ZIGZAG CAM CONTACT SUPPORTER SHAFT
11		ZIGZAG CAM CONTACT SUPPORTER
12		ZIGZAG CAM CONTACT
13		ZIGZAG CAM CONTACT SPRING
14		ZIGZAG REGULATOR PLATE
15		ZIGZAG REGULATOR NUT
16		SET SCREW (M3×10 B)
17		E-RING (ETW-4)
18		E-RING (ETW-5)
19		SS CAM CONTACT SUPPORTER
20		SS CAM CONTACT
21		SS CAM CONTACT SPRING
22		FEED REGULATOR CRANK
23		BH REGULATOR PLATE
24		BH SPRING
25		SET SCREW (M4×20)
26		NUT (ALN-4)
27		SET SCREW (M3×6 A)
28		PATTERN SELECTOR CAM SHAFT
29		PATTERN SELECTOR CAM
30		PATTERN SELECTOR CAM PLATE
31		SET SCREW (M4×8)
32		BH PATTERN SELECTOR CAM
33		SET SCREW (M4×4 C)
34		E-RING (ETW-6)
35		PATTERN CAM CONTACT SUPPORTER SHAFT
36		PATTERN PLATE
37		FEED REGULATOR
38		SET SCREW (M4×6 B)
39		WASHER (6.2×12×0.5)
40		REVERSE LEVER
41		REVERSE PLATE
42		REVERSE ROD
43		E-RING (ETW-3)
44		SPRING
45		CS-RING (CSTW-4.5)
46		REVERSE BUTTON
47		SELECTOR DIAL SHAFT COMPLETE
48		WASHER (7.2×12×1.0)
49		SELECTOR DIAL PLATE
50		SPRING PIN (φ2.5×12)
51		SELECTOR DIAL



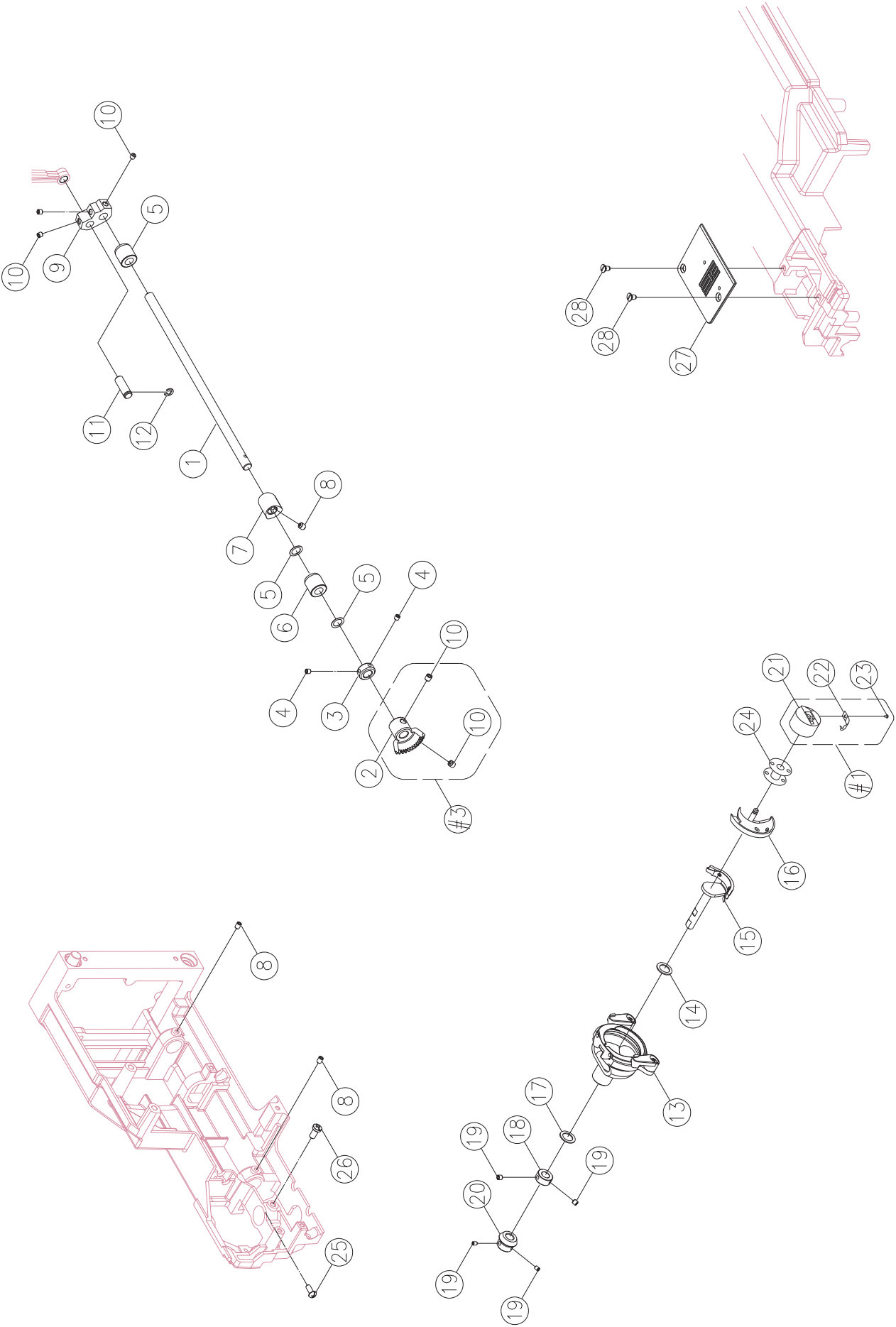
No. Part No.	Description
1 270 V10333000	PRESSER BAR LIFTER LEVER
2	PRESSER BAR LIFTER LEVER SCREW WASHER
3	SET SCREW (M4X10 B)
4	TENSION LEVER LIFTER
5	TENSION LEVER LIFTER SPRING
6	PRESSER BAR BRACKET
7	SET SCREW(M6×5 C)
8	PRESSER BAR
9	PRESSER BAR SPRING
10	PRESSER BAR REGULATING SCREW
11 416128201	SHANK COMPLETE
12 416118401	SHANK SCREW (9/64×40×8)
13 416128401	ALL PURPOSE FOOT (J)
14	NEEDLE BAR SUPPORTER
15	NEEDLE BAR
16 416150801	NEEDLE BAR BRACKET CPL
17	NEEDLE BAR BRACKET (2)
18	SET SCREW(M4×4 C)
19	SET SCREW(9/64×40×6)
20	NEEDLE BAR SUPPORTER PIN
21	E-RING (ETW-5)
22	NEEDLE CLAMP
23	NEEDLE CLAMP SCREW
24	NEEDLE
25	NEEDLE BAR SUPPORTER SPRING
26 416235801	NEEDLE BAR CRANK ROD
27	NEEDLE BAR DRIVING ROD
28	NEEDLE BAR DRIVING ROD PIN
29	ZIGZAG CAM CONTACT SUPPORTER SHAFT
30	ZIGZAG REGULATOR CRANK
31	ROD
32	E-RING (ETW-4)
33	SET SCREW(M4×5 C)
34	SET WASHER
35	SET SCREW(M4×8 A)
#1 416245301	NEEDLE CLAMP COMPLETE



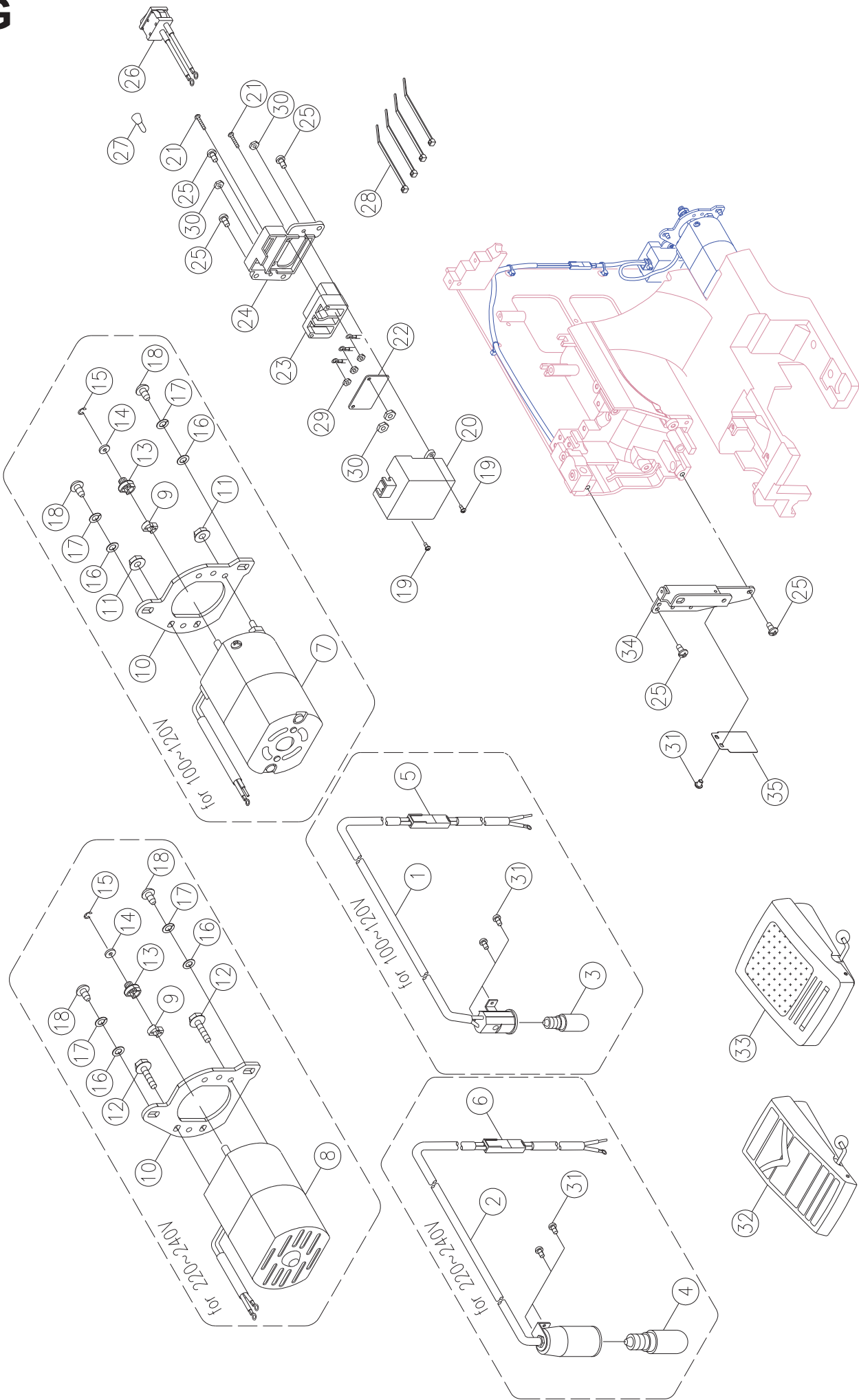
TAKE CARE THE CIRCLED PARTS FOR THE MODEL YOU WANT.

No.	Part No.	Description
1		ARM
2		BASE PLATE ADJUSTMENT SCREW
3		BASE PLATE ADJUSTMENT SCREW SPRING
4		ADJUSTMENT FREE ARM BASE CUSHION RUBBER
5	416526101	FREE ARM BASE CUSHION RUBBER
6		FREE ARM FOOT
7		SET SCREW (M6X10)
8		FREE ARM FOOT BASE
9		SET SCREW (M3×8)
10		DIAL TENSION SUPPORTER PLATE
11		SPRING PIN (φ3×10)
12		DIAL TENSION WAFT PLATE
13		E-RING (ETW-4)
14	416153601	DIAL TENSION DISC (1)
15	416146301	DIAL TENSION DISC
16	416526801	DIAL TENSION SPRING REGULATOR
17	416155901	DIAL TENSION SPRING
18		DIAL TENSION REGULATOR
19		DIAL TENSION SPRING PLATE
20		DIAL TENSION KNOB
21		WASHER (WW-5)
22		WASHER (5.2×10×0.5)
23		DIAL TENSION SUPPORTER PLATE COVER
24	416171301	THREAD GUIDE
25	416162601	THREAD GUIDE SPRING
26		CS-RING (CSTW-5)
27		DIAL TENSION GUIDE SPRING TUBE
28		SET SCREW (M4×20 B)
29		SET SCREW (M4×6 D)
30		WASHER (4.2×8×0.8)
31		SET SCREW (M4×14)
32		SET SCREW (M4×6 B)
33		TENSION LEVER REGULATING PLATE
34		SET SCREW (M4×8 A)
35		BOBBIN WINDER FRAME COMPLETE
36	416169701	BOBBIN WINDER CRANK COMPLETE
37		BOBBIN WINDER CRANK SPRING
38	416149201	BOBBIN WINDER RUBBER PULLEY
39		E-RING (ETW-5)
40		SPRING PIN (φ3×8×0.6)
41		STITCH LENGTH GEAR
42		STITCH LENGTH DIAL COMPLETE
43		WASHER (6.2×12×0.5)
44		E-RING (ETW-4)
45		CLUTCH ROD PLATE CPL
46		CLUTCH ROD
47		CLUTCH ROD SPRING
56		SET SCREW (M4×8 B)

No.	Part No.	Description
1		FEED REGULATING SHAFT
2		FEED REGULATING
3		FEED REGULATING PLATE
4		FEED ROD
5		E-RING (ETW-4)
6		NUT (9/64×40 T=3)
7		SET SCREW (9/64×40×11)
8		FEED REGULATING SPRING
9		SET SCREW (M4×6 C)
10		FORK ROD
11		ENDURE ATTRITION WASHER (5.7×10.2×0.5)
12		FORK ROD SPRING
13		FEED REGULATING BLOCK
14		ENDURE ATTRITION WASHER (5.5×12×0.25)
15		FEED ROCK SHAFT
16		FEET ROCK FRAME
17		SET SCREW (M4×8 A)
18		FEED DOG FRAME
19		FEED DOG FRAME SHAFT
20		E-RING (ETW-3)
21		NUT (SPN-4)
22		WASHER (4.2×8×0.8)
23	416171601	FEET DOG
24		SET SCREW (M3×5 B)
25		FEED DOG FRAME SPRING
26		FEED ROCK BUSHING
27		E-RING (ETW-6)
28		PATTERN CAM SHAFT COLLAR
29		SET SCREW (M4×4 C)
30		ENDURE ATTRITION WASHER (8.2×12×0.25)
31		FEED ROCK CRANK
32		WASHER (4×8×0.5)
33		SET SCREW (M4×15 B)
34		FEED ROCK CRANK NUT (M4)
35		E-RING (ETW-4)
36		BUSHING HOLDER PLATE
37		FEED LIFTING ROCK CRANK
38		SEW SCREW
39		NUT (M4 T=3)
40		SEW SCREW KNOB
41		FEED LIFTING ROCK SHAFT
42		WASHER (4.2×7.2×1.2)

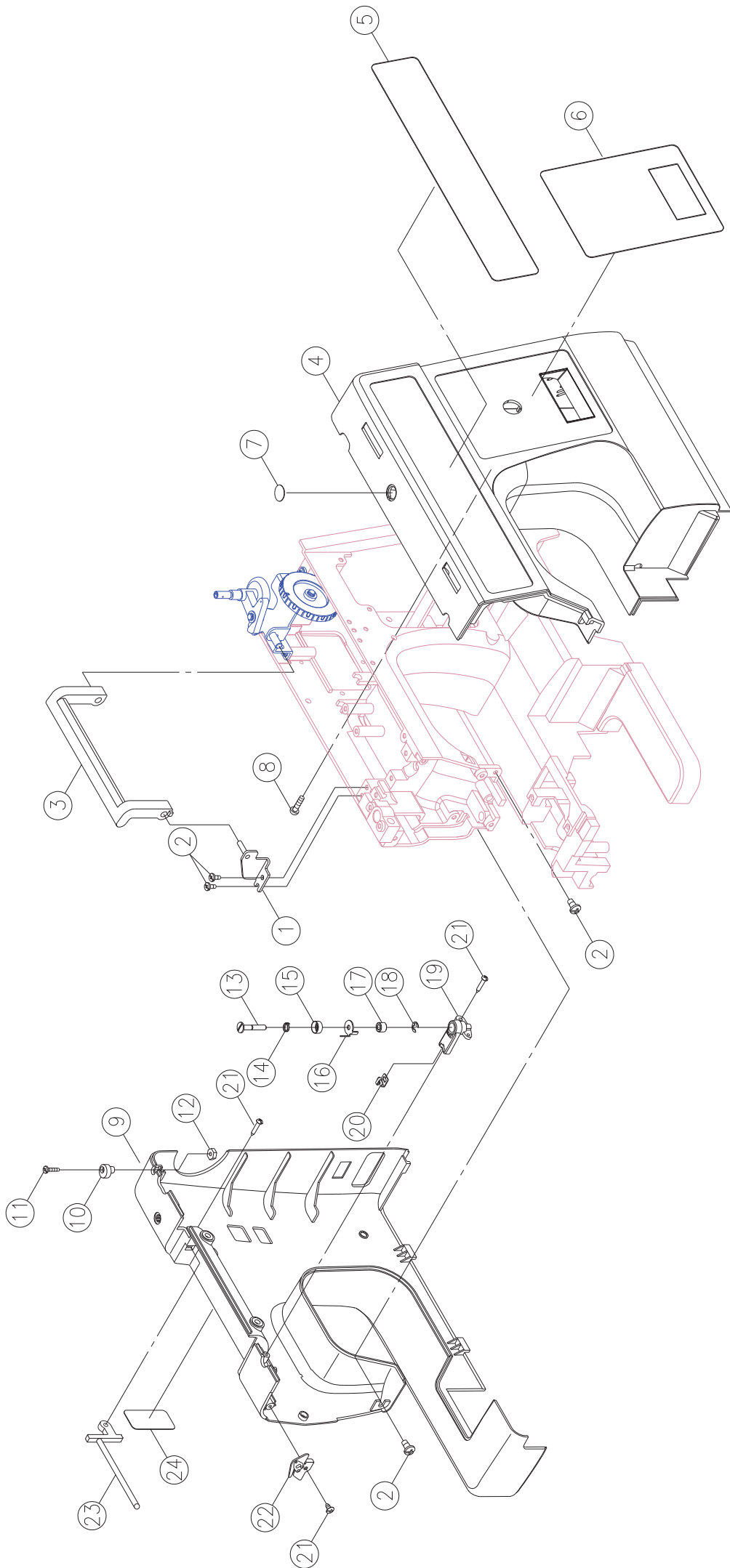


No. Part No.	Description
1	LOWER SHAFT
2	LOWER SHAFT GEAR
3	LOWER SHAFT COLLAR
4	SET SCREW (M4X4C)
5	ENDURE ATTRITION WASHER (8.2X12X0.25)
6	FEED ROCK BUSHING
7	FEED LIFTING ROCK CAM
8	SET SCREW (M4X6C)
9	CRANK CONNECTING ROD CRANK
10	SET SCREW (M5X5C)
11	CRANK CONNECTING ROD CRANK PIN
12	E-RING (ETW-5)
13 68000176	OPEN SHUTTLE RACE COMPLETE
14	ENDURE ATTRITION WASHER (7.6×12×0.13)
15	SHUTTLE DRIVER COMPLETE
16 416392101	SHUTTLE HOOK (4.6MM)
17	ENDURE ATTRITION WASHER (8.2×16×0.5)
18	SHUTTLE DRIVER SHAFT COLLAR
19	SET SCREW(11/64×40×4)
20	SHUTTLE DRIVER SHAFT GEAR
21	BOBBIN CASE
22	BOBBIN CASE SPRING
23	BOBBIN CASE SPRING SET SCREW
24 68000175	BOBBIN
25	SET SCREW (M4X10B)
26	SET SCREW (M5X10B)
27 416171501	NEEDLE PLATE
28 416122901	NEEDLE PLATE COMPLETE SET SCREW
#1 416153401	BOBBIN CASE COMPLETE
#3 416245801	LOWER SHAFT GEAR COMPLETE

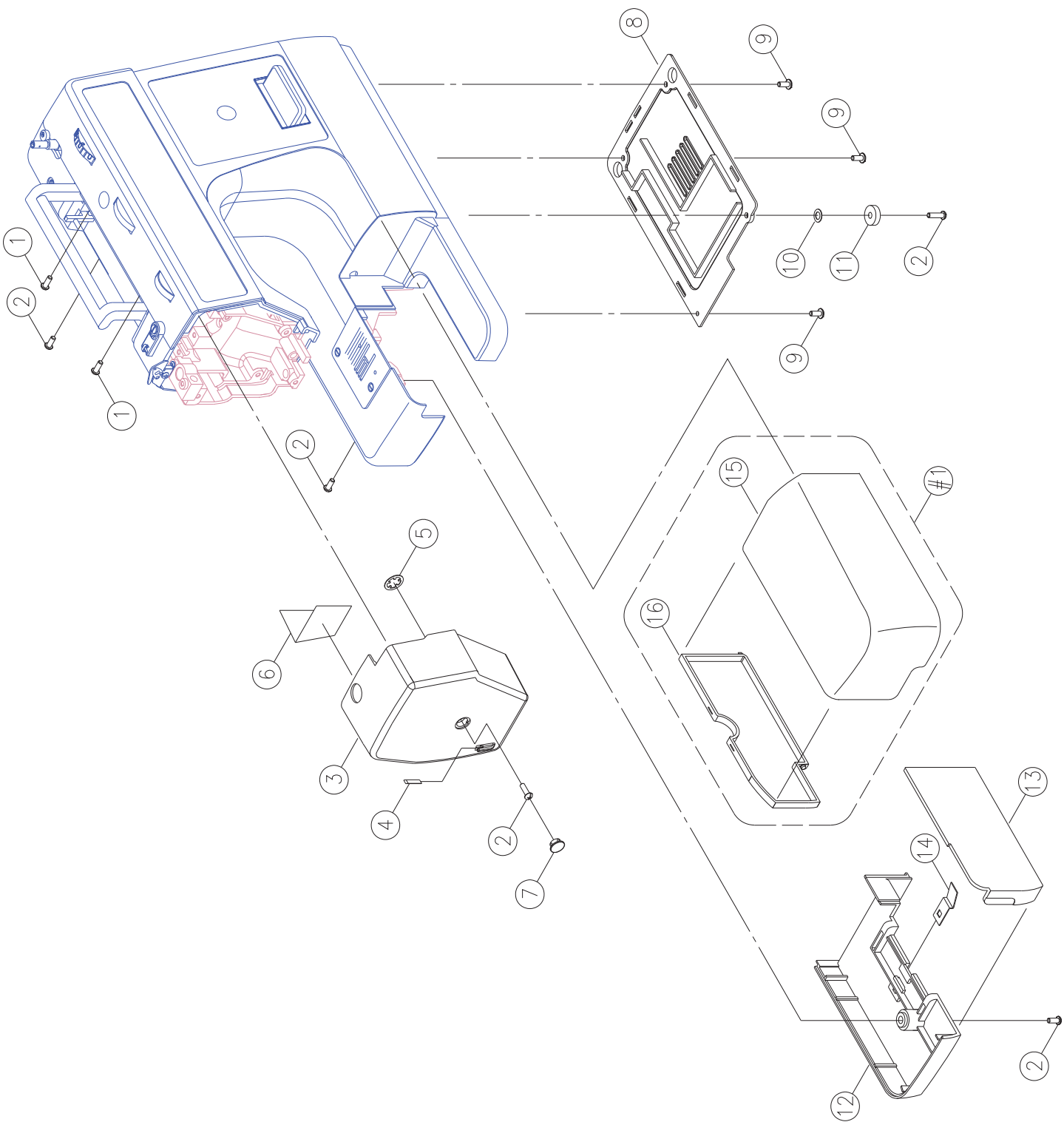


ALL VOLTAGE APPLICATION & SPEC. , PLEASE CHECK NEXT PAGE.

No.	Part No.	Description	
1		LAMP HOLDER COMPLETE	FOR 100~ 120V
2		LAMP HOLDER COMPLETE	FOR 220~240V
3	416126901	LAMP (10W) FOR 120V	
4	416127001	LAMP (15W) FOR 240V	
5		LEAD WIRE ASS 'YFOR 100~120V	
6		LEAD WIRE ASS 'YFOR 220~240V	
7	416528001	MOTOR COMPLETE HF-07150	FOR 110~120V /U.S.A
8	416430001	MOTOR COMPLETE HF-07250	FOR 230V /EU.
8		MOTOR COMPLETE HF-07250	FOR 230V / DUBAI
8		MOTOR COMPLETE HF-07250	FOR 230V / INDIA
8	416528301	MOTOR COMPLETE HF-07250	FOR 240V /U.K
8	270 001V881005	MOTOR COMPLETE HF-07250	FOR 240V /SAA
9		CUSHION RUBBER	
10		MOTOR BRACKET	
11		NUT (M4 T=5.5)	FOR 100~120V
12		SET SCREW (M4×10.2)	FOR 220~240V
13		BELT WHEEL	
14		MOTOR FEED REGULATOR COLLAR	
15		E-RING (ETW-3)	
16		WASHER (5.4×10×0.9)	
17		SPRING WASHER (5.2×9×1)	
18		SET SCREW (M5×12)	
19		SET SCREW (M3×8 B)	
20		RECEPTACLE HOLDER COVER	
21		SET SCREW (M3×20)	
22		CONCERT INSULATION PLATE	
23		RECEPTACLE	
24		RECEPTACLE HOLDER	
25		SET SCREW (M4×8 A)	
26	416115001	SWITCH ASS 'Y	
27		END TERMED	
28		CORD CLIP	
29		NUT (M3×4)	
30		NUT (M3 T=2.3)	
31		SET SCREW (M3×5 B)	
32	416183301	FOOT CONTROLLER (KD-1902)	FOR 100~120V / U.S.A
33	68001147	FOOT CONTROLLER (KD-2902)	FOR 230V / EU.
33	416523901	FOOT CONTROLLER (KD-2902)	FOR 230V / DUBAI
33	416112701	FOOT CONTROLLER (KD-2902)	FOR 240V / U.K
33	416183701	FOOT CONTROLLER (KD-2902)	FOR 240V / SAA
34		LAMP BRACKET	
35		SHIELD	

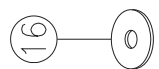
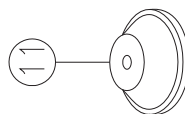
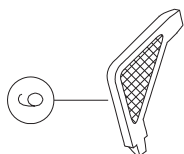
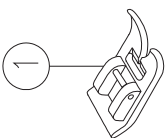
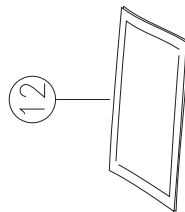
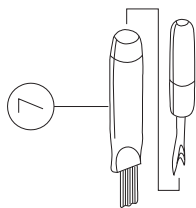
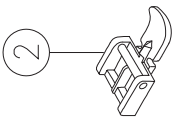
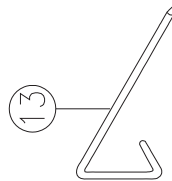
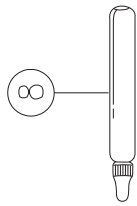
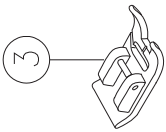
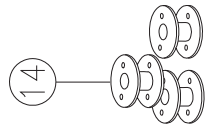
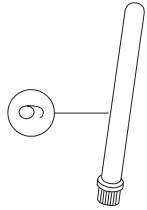
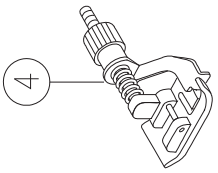
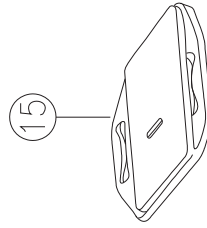
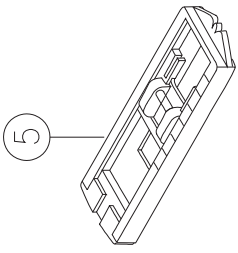


No.	Part No.	Description
1		HANDLE BRACKET COMPLETE
2		SET SCREW (M4×8 A)
3	416529001	HANDLE
4		FRONT COVER CPL
5		FRONT PANEL
6		FRONT PANEL
7		PLATE (1)
8		SET SCREW (M4×12 B)
9		BACK COVER
10		BOBBIN WINDER STOPPER
11		SET SCREW (9/64×40×18 B)
12		NUT (9/64×40 T=3)
13	416148101	BOBBIN WINDER THREAD GUIDE CPL
14		BOBBIN WINDER THREAD GUIDE SPRING
15		BOBBIN WINDER SPRING DISC
16		BOBBIN WINDER THREAD GUIDE
17		SPACER
18		E-RING (E-3)
19		BOBBIN WINDER THREAD GUIDE BASE
20	270 V610363001	THREAD GUIDE
21		SET SCREW (M3×16.7 B)
22	416167801	THREAD GUIDE COMPLETE
23	416169401	SPOOL PIN BASE
24		PLATE (2)



No.	Part No.	Description
1		SET SCREW (M4×15 B)
2		SET SCREW (M4×10 B)
3		FACE PLATE COMPLETE
4	416172501	THREAD CUTTER
5		CS-RING (CSTW-5)
6		HEAT RESISTANT PLATE
7		CAP
8		BOTTOM PLATE
9		SET SCREW (M4×8 A)
10		WASHER (5.2×16×1.0)
11	270 J31413000	FREE ARM BASE CUSHION RUBBER
12		BED COVER
13		HOOK COVER
14		HOOK COVER SPRING
15		SEWING TABLE BODY
16		SEWING TABLE BODY COVER
#1		SEWING TABLE BODY COMPLETE

J



Standard accessories

J

No.	Part No.	Description
1	416128401	ALL PURPOSE FOOT
2	416128701	ZIPPER FOOT (I)
3	416128301	SATIN STITCH FOOT
4	416128501	BLIND HEM FOOT (L)
5	416128901	BUTTONHOLE FOOT (B)
6	68000177	L-SCREWDRIVER
7	416127701	SEAM RIPPER/ BRUSH
8		OIL BOTTLE
9	416157501	SECOND SPOOL PIN
10	416157601	SPOOL HOLDERS (SMALL)
11	416157101	SPOOL HOLDERS (LARGE)
12		PACK OF NEEDLE
13	416127101	SEAM GUIDE
14	68000175	BOBBIN
15	416127901	DARNING PLATE
16	416127301	FELT PAD
17		SOFTCOVER